

TEX - BAR

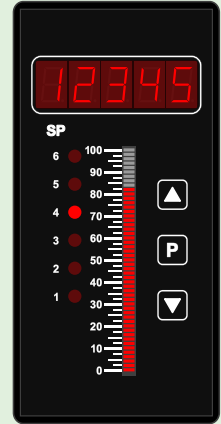
0/4-20MA, 0-2/10V BAR GRAPH CONTROLLER

This controller is ideal for a variety of applications where instant, visual indication of the process variable is required.

It is particularly suited to level measurement or rate movement indication.

Input signal	Current (0/4-20mA) Voltage (0-2/10V)
Excitation	24V DC (50mA max)
Resolution	16-bit
Sampling rate	10Hz
Accuracy	0.05%
Temp. drift	Typically 50ppm/°C
Linearisation	Linearisation tables up to 32-point, (program with serial port)
Relay outputs	2 x 5A form A or 4 x 5A form A

- 3 buttons
- 8mm LED display, 5 digits
- 0-100% bar graph
- 6 setpoint indicator LED's
- IP65 dust & splash-proof
- Panel mount case 96 x 48 x 120mm (H x W x D)



----- OPTIONAL -----

- Analogue output** Isolated 16-bit 4-20mA or 0-10V output
- Serial port** Isolated RS232/485

CODE	DESCRIPTION
TEX - BAR	TEX Range 4-20mA / 0-10V bar graph process controller
- R2	2 x relays
- R2A	2 x relays, 1 x analogue output
- R2S	2 x relays, 1 x serial port
- R2AS	2 x relays, 1 x analogue output, 1 x serial port
- R4	4 x relays
- R4A	4 x relays, 1 x analogue output
- R4S	4 x relays, 1 x serial port
- R4AS	4 x relays, 1 x analogue output, 1 x serial port
- LV	Low voltage (15-48V AC / 10-72V DC)
- HV	High voltage (85-265V AC / 95-370V DC)