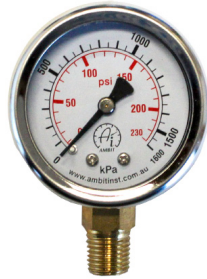


# Back Flow Kit Components

522-050-76-4T



*Back Flow Kit with Pressure Gauge*

BF-22



BF-21



BF-4



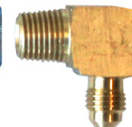
BF-6



BF-4



BF-5



NYLON TUBE



BF-7



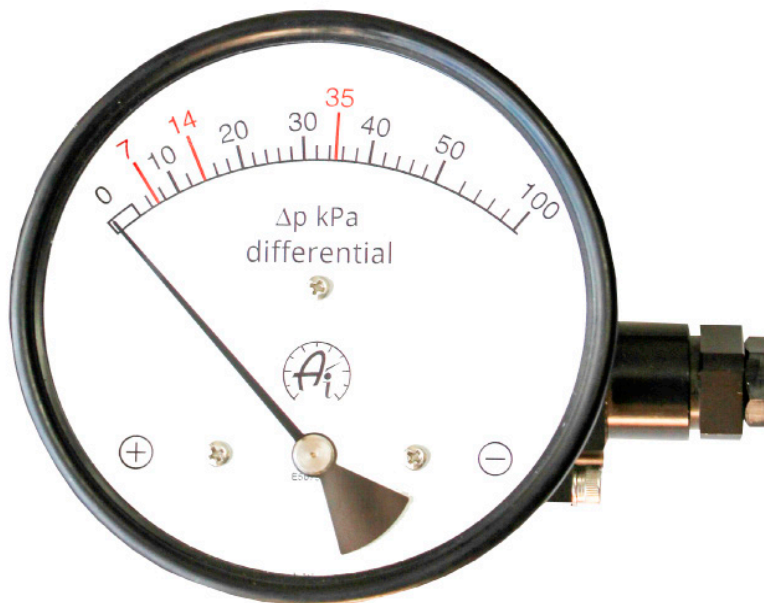
BF-10



BF-8



BF-12

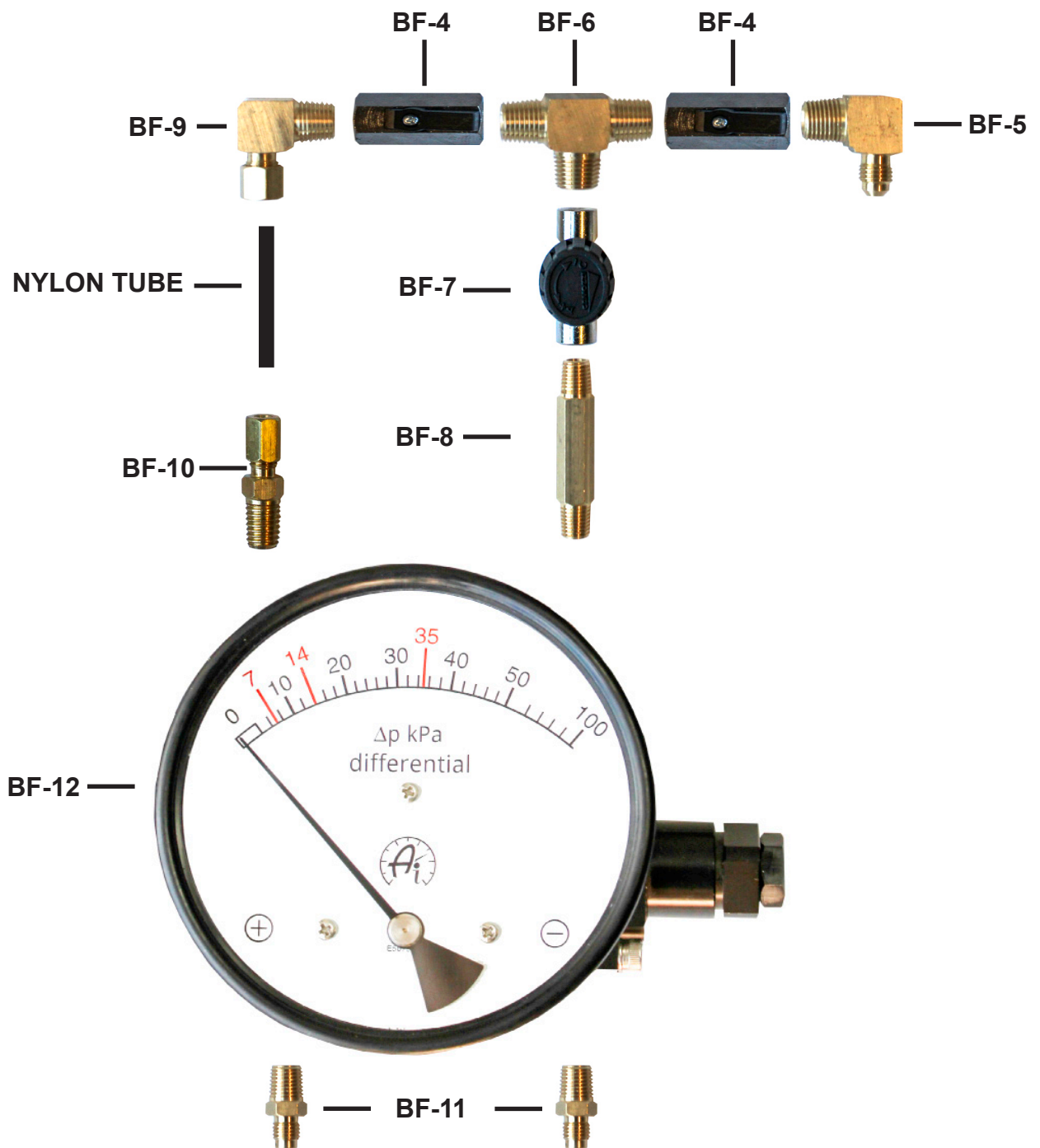


BF-11



# Back Flow Kit Components

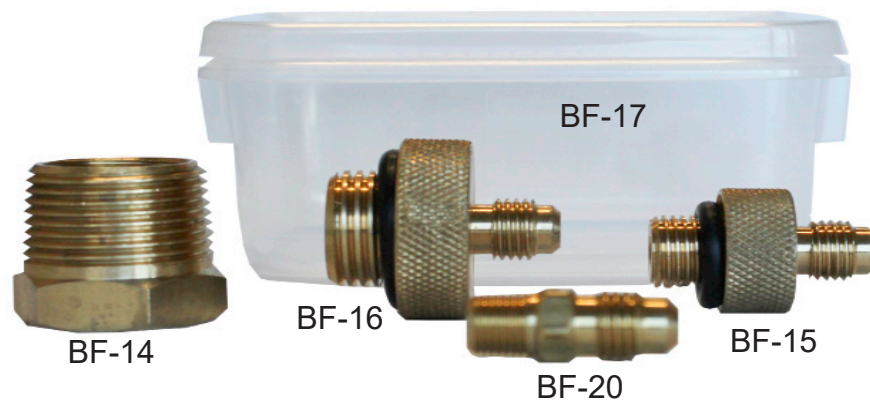
## Back Flow Kit without Pressure Gauge



# Back Flow Kit Components

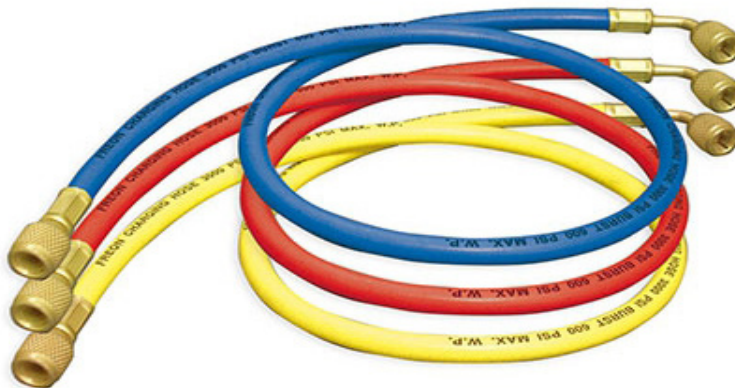
## Part No. BF-Fittings

- 1 x BF-17 - Plastic Container
- 3 x BF-14 - Brass Bush 3/4"BSPT x 1/2"BSP-F
- 3 x BF-15 - Brass Nipple 1/4"BSPP x 1/4"Flare with O-Ring
- 3 x BF-16 - Brass Nipple 1/2"BSPP x 1/4"Flare with O-Ring
- 3 x BF-20 - Brass Nipple 1/8"BSPT x 1/4"Flare



## Part No. BF-2

Hoses to suit Back Flow Kit (Set of 3)



Distributed by:  
Hinco Instruments  
5/52 Vinnicombe Drive  
Canning Vale WA 6155  
Ph 0894556777  
email: [frontdesk@hinco.com.au](mailto:frontdesk@hinco.com.au)

**AMBIT**  
**INSTRUMENTS PTY LTD**